

G-Tape Recommendation Cardboard

| Weight | Thickness of paper | Creasing rule (mm) Thickness x Height | Recommended G-Tape | | |
|--------|--------------------|--|--------------------|-----------|----------------|
| | | | Item Code | Thickness | Creasing width |
| 50g | 0.063 - 0.065 | 2pt (0.7) X 23.7 | A-0308 | 0.3 | 0.8 |
| 180g | 0.22 - 0.23 | 2pt (0.7) X 23.6 | A-0410 | 0.4 | 1.0 |
| 200g | 0.26 - 0.27 | 2pt (0.7) X 23.6 | A-0412 | 0.4 | 1.2 |
| 230g | 0.29 - 0.30 | 2pt (0.7) X 23.6 | A-0413 | 0.4 | 1.3 |
| 270g | 0.34 - 0.35 | 2pt (0.7) X 23.6 | A-0414 | 0.4 | 1.4 |
| 300g | 0.39 - 0.40 | 2pt (0.7) X 23.5 | A-0515 | 0.5 | 1.5 |
| 350g | 0.44 - 0.46 | 2pt (0.7) X 23.5 | A-0516 | 0.5 | 1.6 |
| | | 3pt(1.05)X 23.5 | A-0519 | 0.5 | 1.9 |
| 400g | 0.50 - 0.52 | 2pt (0.7) X 23.4 | A-0517 | 0.5 | 1.7 |
| | | 3pt(1.05)X 23.4 | A-0520 | 0.5 | 2.0 |
| 450g | 0.57 - 0.59 | 2pt (0.7) X 23.4 | A-0519 | 0.5 | 1.9 |
| | | 3pt(1.05)X 23.4 | A-0522 | 0.5 | 2.2 |
| 500g | 0.63 - 0.65 | 2pt (0.7) X 23.4 | A-0520 | 0.5 | 2.0 |
| | | 3pt(1.05)X 23.4 | A-0522 | 0.5 | 2.2 |
| 550g | 0.70- 0.72 | 3pt(1.05)X 23.3 | A-0624 | 0.6 | 2.4 |
| | | 4pt (1.4) X 23.3 | B-0627 | 0.6 | 2.7 |
| 600g | 0.76 - 0.78 | 3pt(1.05)X 23.2 | A-0825 | 0.8 | 2.5 |
| | | 4pt (1.4) X 23.2 | B-0830 | 0.8 | 3.0 |

* The above-mentioned table is standard setting. For your needs, please adjust your G-Tape settings of the thickness and/or the crease width according to your paper weight or height of your creasing rule.

Channel width C =

Thickness of creasing rule A + 2 x Thickness of paper B

Example calculation:

Scenario: 270 g, A = 2 pt (0,7 mm), B=0,35 mm

$C = 0,7 \text{ mm} + 2 \times 0,35 \text{ mm}$

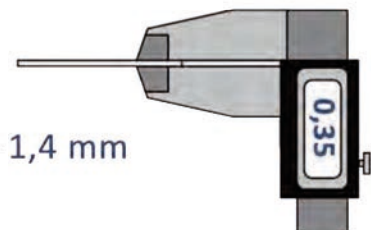
$C = 1,4 \text{ mm}$

Selection:

1. 2 pt = A Type 2. B = 0,35 mm 3. C = 1,4 mm



A- 04 14



G-Tape Recommendation Corrugated Cardboard

| Parameter | | | DAISO Kombi | | | | | | Rubber (180° folding) |
|------------------|--------------|--------------------|----------------------|---------|--------|---------|--------|--------|-----------------------|
| Flute | Diecut from | Original thickness | DAISO setting | 2pt | 3pt | 4pt | 6pt | 8pt | |
| F | Printed side | 0.8mm | 23.0 x 3/4pt | *A-0622 | A-0625 | B-0627 | | | No |
| F | Bottom side | 0.8mm | 23.0 x 3/4pt | *A-0623 | A-0625 | B-0627 | | | No |
| E | Printed side | 1.5mm | 23.0 x 4pt | | A-0624 | B-0627 | C-0832 | | No |
| E | Bottom side | 1.5mm | 23.0 x 4pt | | S-0627 | B-0630 | C-0835 | | No |
| E with cardboard | Printed side | 1.5mm | 23.0 x 4pt | | A-0825 | B-0830 | C-0835 | | No |
| E with cardboard | Bottom side | 1.5mm | 23.0 x 4pt | | S-0630 | B-0632 | C-0835 | | No |
| B | Bottom side | 3.0mm | 23.0 x 4/6pt | | S-0830 | B-0835 | C-0840 | D-0850 | Yes |
| B with cardboard | Bottom side | 3.0mm | 23.0 x 4/6pt | | S-0830 | B-0835 | C-0840 | D-0850 | Yes |
| C | Bottom side | 4.0mm | 22.8 x 4/6pt | | S-0835 | B-0840 | C-0845 | D-0855 | Yes |
| A | Bottom side | 5.0mm | 22.8 x 4/6pt | | | B-0840 | C-1050 | D-1060 | Yes |
| FE | Bottom side | 2.3mm | 23.1 x 3/4pt | | S-0727 | B-0732 | C-0740 | D-0750 | |
| EE | Bottom side | 3.0mm | 23.0 x 4/6pt | | S-0830 | B-0835 | C-0840 | D-0850 | |
| EB | Bottom side | 4.5mm | 22.8 x 6/8pt | | | *B-0840 | C-1050 | D-1060 | |
| EC | Bottom side | 5.5mm | 22.7 x 6-8pt | | | *B-0845 | C-1050 | D-1060 | |
| BC | Bottom side | 7.0mm | 22.2 o. 22.3 x 6/8pt | | | *B-1045 | C-1050 | D-1060 | |

This is a standard setting. It may vary depending on conditions.

*Not recommended: Only used if creasing rule cannot be changed.

Channel width C =
Thickness of creasing rule A + 2,2 x Thickness of paper C

Example calculation:

Scenario: B-Wave, A = 4 pt (1,4 mm), B = 0,8 mm

$C = 1,4 \text{ mm} + 2,2 \times 0,8 \text{ mm}$

$C = 3,16 \text{ mm} = 3,2 \text{ mm}$

Selection:

1. 4 pt = B Type 2. B = 0,8 mm 3. C = 3,2 mm



B-0832

